


# **WagnerGUIDE**

*- the description -*



 **WagnerGUIDE**

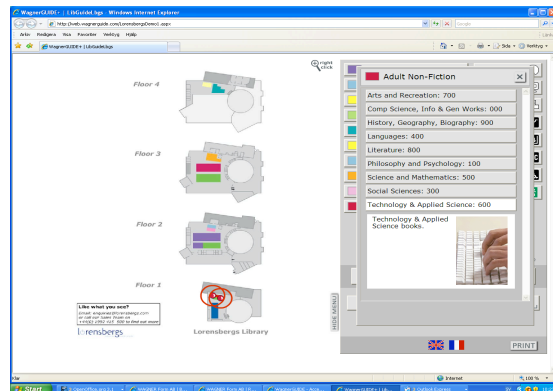
**General aspects:**

The basic idea is to give the visitor an overview, location and the right information *before, during* and *after* the visit.

(The visitor can jump between a helicopter-perspective and a detailed interior-perspective – back and forth.)



The application in an InfoKIOSK.

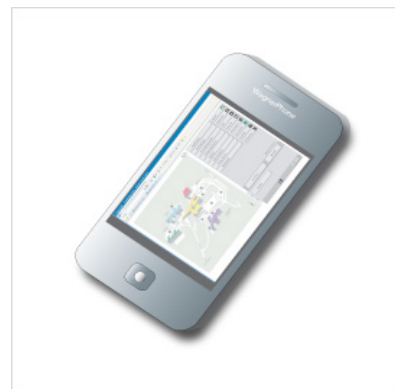


WagnerGUIDE is also suitable for the person that gives information to visitors and not forgetting - the staff itself. The guide creates self-reliant visitors....

### **Field of applications;**

It is possible to run the WagnerGUIDE on a **web site**, an infokiosk, (mobile phone: earlier/new version) and on every computer (touch screens) - with or without mouse and keyboard. It is also possible to project the application / image on a wall/floor etc. You can always print the information and bring it with you or give it away to another visitor...

The application can be used in every internet/intranet environment. It is easy to link back and forth between the guide and a website etc. When the circumstances are the right, it is possible to connect the guide to data bases (as booking and reservation systems, address-lists, library catalogues etc etc). The new WagnerGUIDE Access+ can also be used as a StartPAGE on public computers.



## OrientationMAP (Floor Plan) and ApplicationMAP

The well-designed, distinct and easy to read Map/Floor Plan makes it even more comfortable to use the guide. We have developed our own mapping method - with simplified pictures with a few, clear categories and colours. We create both interior and exterior images in two or three dimensions. (Use it also in folders and posters.)

### Fisksätra bibliotek - Nacka kommun -

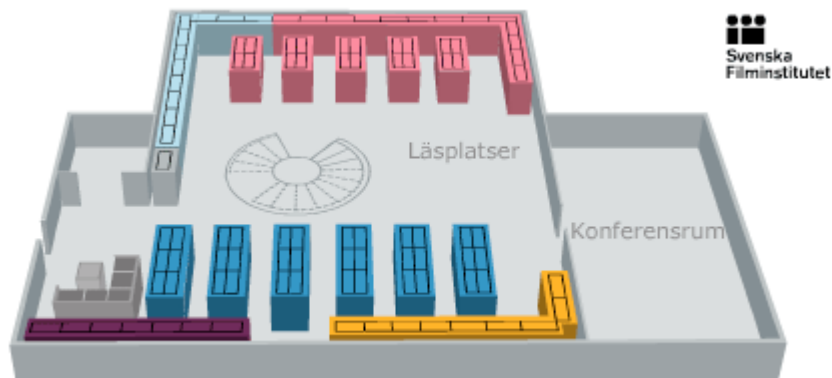


This is an OrientationMAP used as a poster (2D image).



An exterior 3D image (detail from WagnerGUIDE Access+ / ApplicationMAP)

The OrientationMAP is a very important part of the concept. When we have finished the OrientationMAP we convert it to an ApplicationMAP – without icons/menues etc.



An interior 3D image (detail from ApplicationMAP)

### ***User Aspects and Accessibility:***

WagnerGUIDE Access+ is one of the most easy-used map solutions you can get. We have checked it according to **W3C**s international *Checklist of Checkpoints for Web Content Accessibility Guidelines 1.0*. The Wagnerguide application was classified as something in between; AA and AAA (the highest level).

The guide is suitable to everyone; but it is specially developed for immigrants, tourists, children, teenagers and disabled people as dyslectics, visually impaired and people with brain diseases (stroke).

The interface is especially developed to meet those demands. A clear and well-structured trackable interface with big buttons and high colour contrasts - helps those groups – and gives an *intuitive* guide. The user can enlarge the Text and the Floor Plan picture (right click). The disabled can "tab" up and down (use some short-cuts) and run the guide together with Jaws and ZoomText. He can also hide the Menu Section.



### ***Technical aspects:***

The application is built with modern standard technology as ASP.net, Visual Studio, FLASH, HTML, AJAX, CSS, SQL-Server 2005 and different scripts. The technique is based on the client-server concept - and is simple to

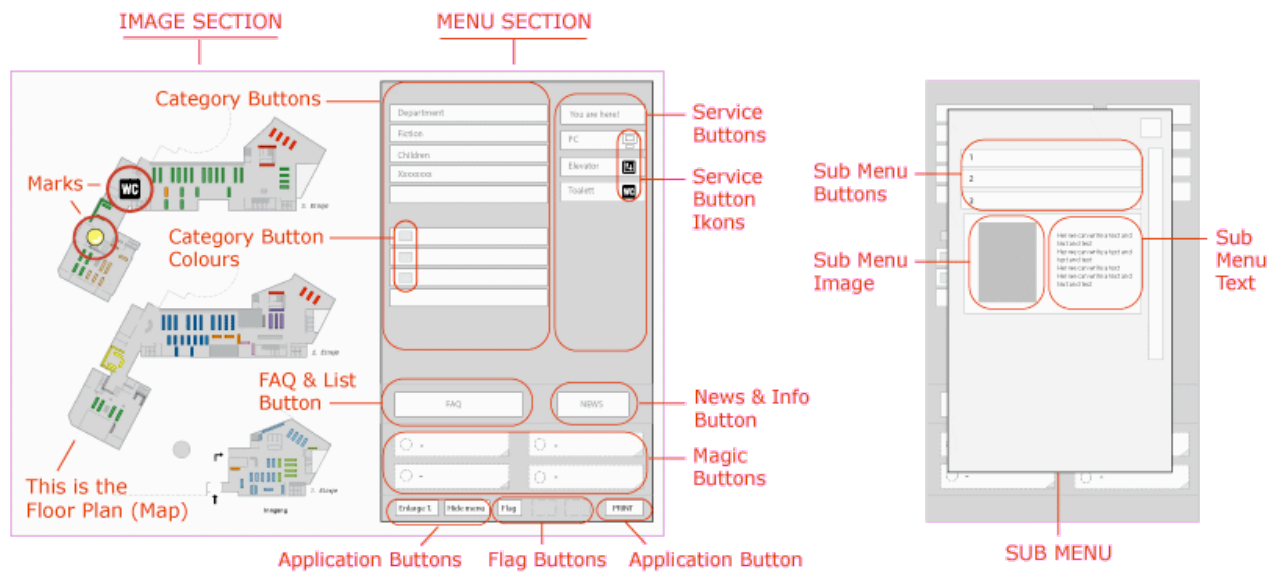
implement. The application is hosted on our secure server and can be run on every up-to-date browser. Internet Explorer is the most compatible one.

**Screen Resolutions**

We recommend the screen resolution; 1280 x 1024.



**The Structure**



*Description of important concepts/functions and terms.*

**Editing:**

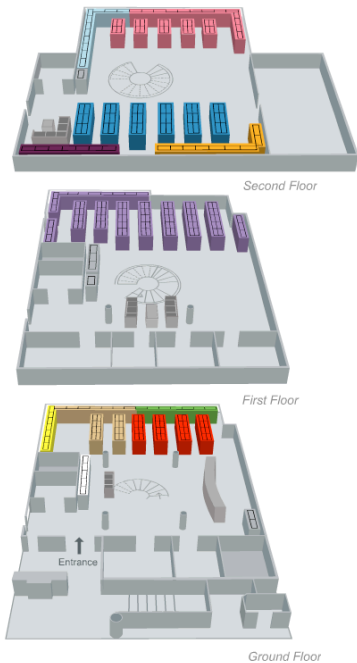
Most of the content can be edited by the administrator. In a user-friendly interface she/he can (with no preparation) change more or less everything – depending on what level the institution has bought (see below). At our web site it is possible to try edit functions. (Help-texts make it smooth)

**MENU SECTION:** you can choose and edit following;

1. *Category- Service- News & Info- FAQ & List- Flag and Magic Buttons are all editable. (You can even show or hide the whole buttons.)*
2. *The Category Button's position and its colour (rectangles), The Service Button's position and its Ikon. The Magic Button's Ikon/Colour. All Button-titles including Sub Menu Button-names (except Applic. Buttons )*
3. *Add Sub Menues - if it is a function in the main Button..*
4. *Add Texts and Images. For example the News & Info Button. (Even Sub Menu Images. Sub Menu Texts.)*
5. *Decide, where to place the Marks (Dots / Ikons etc).*
6. *Fetch text information from an extern source. For example addresses.*
7. *Choose to display / embed an external web site / another floor / another house / internal view. (only Magic B.)*
8. *Write in and edit languages (as Swedish, French, English, German, Norwegian, Danish, Polish, Russian , Spanish, Finnish and Czech) The user can use three languages/flags at the same time.*
9. *Connect external URL addresses to Magic Buttons (see above; 7), Texts (Image Section, see below) and Sub Menu Fields. That means: when the user click on the link/button – the web site appears.*
10. *Link from a web site to Wagner GUIDE Access+ . The user can for example; (a) start the program (b) point out and display information - related to the web site's specific article/subject (receptions/departments/wards/media categories /theme etc etc).*
11. *Timer function (close windows after the last visitor)*
12. *Create a path. The editor can very easy create the recommended (red) path from A to B.*
13. *Add a serch field.*
14. *Use a cell phone version.*
15. *Connect WagnerGUIDE to more or less every data base. We help you to establish the relation – directMapping. This is a choice.*

**IMAGE SECTION:** you can edit following;

16. *Write (and formate) simple Texts and integrate and place them (upon the Floor Plan picture) Even link a Text to a webbsite etc.*
17. *Edit the Floor Plan / Map itself (Down Load and edit it in a program like Adobe Illustrator and Up Load it again)*



right click

Search the guide

**Opening Hours**

Monday through Friday: 9 am to 7 pm.  
Saturday: 9 am to 4 pm.  
Sunday: CLOSED.

Other hours may apply for holidays. Please contact the information desk for more information.

CLOSE

Catalogue Local Libraries

PRINT

Logged in as: demoLibraryUK  
[Logout](#)

- START
- Menu Section
  - Category Buttons
  - Service Buttons
  - FAQ & List Button
  - Info Button**
  - Magic Buttons
  - Flag Buttons
  - Direct Mapping
- Image Section
  - Floor plan (Map)
  - Text

Now editing!

Display Help Info Button

Button title - (Max 15 chars)

Hide Button

Opening Hours

Translate to English

Add text/image

Text and Image  Text Only  Image only

Image

Format (rec 380x250px, gif, jpg, png, bmp, max 200kB)

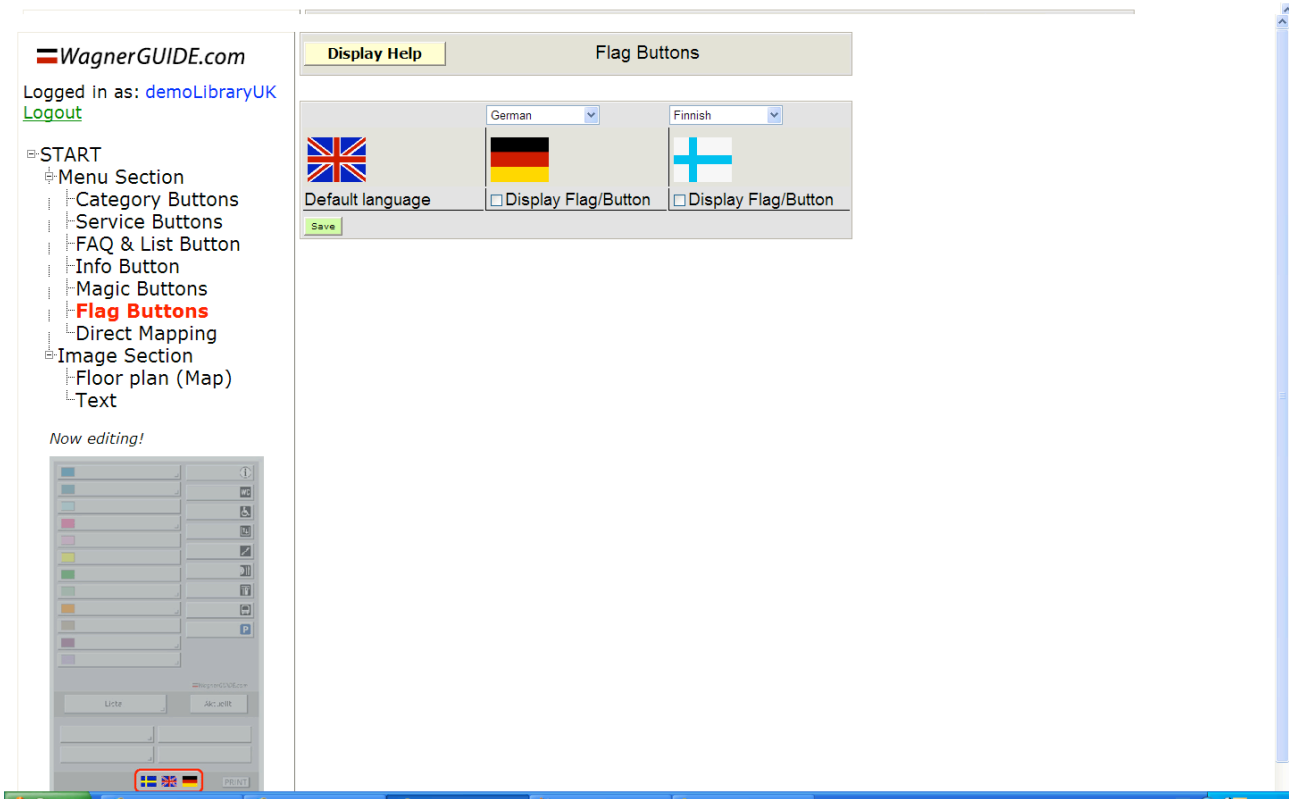
Upload image

Upload Bladdra... Delete image

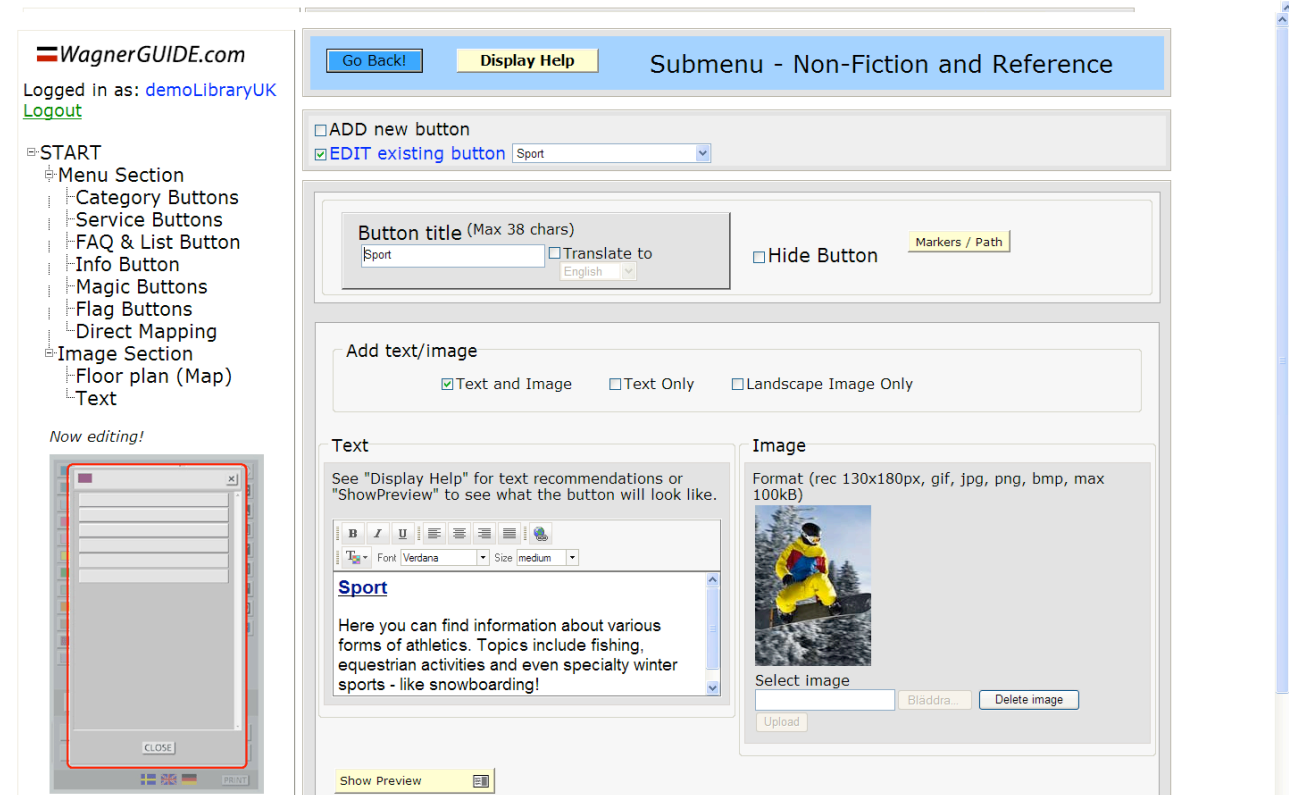
Above we display both the Info Button in the Application and in the Edit Mode.

## Languages

The application is prepared to handle the mother tongue and up to eleven other languages. But it can only display three language flags - at the same time. This is a choice.

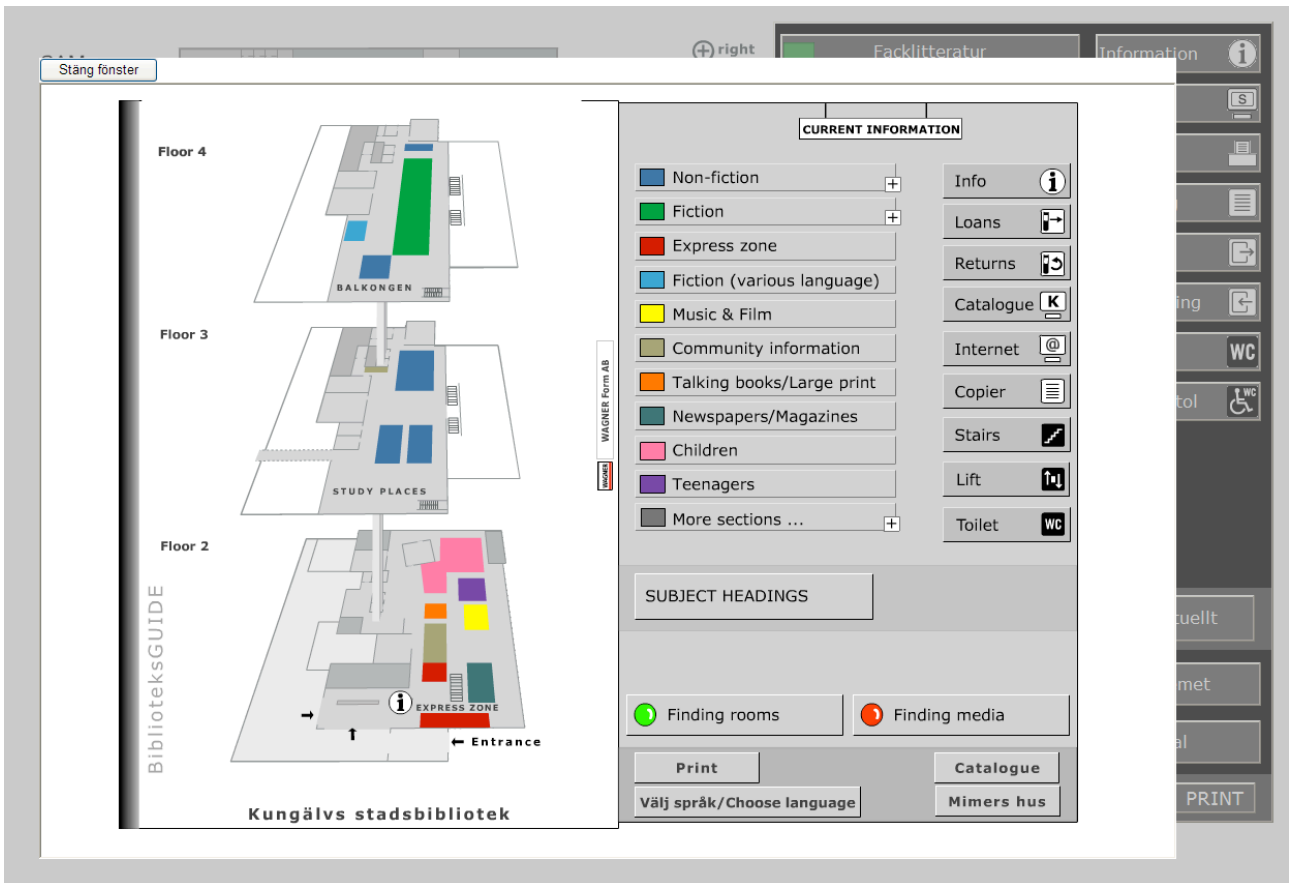


*This displays how easy it is to add languages.*

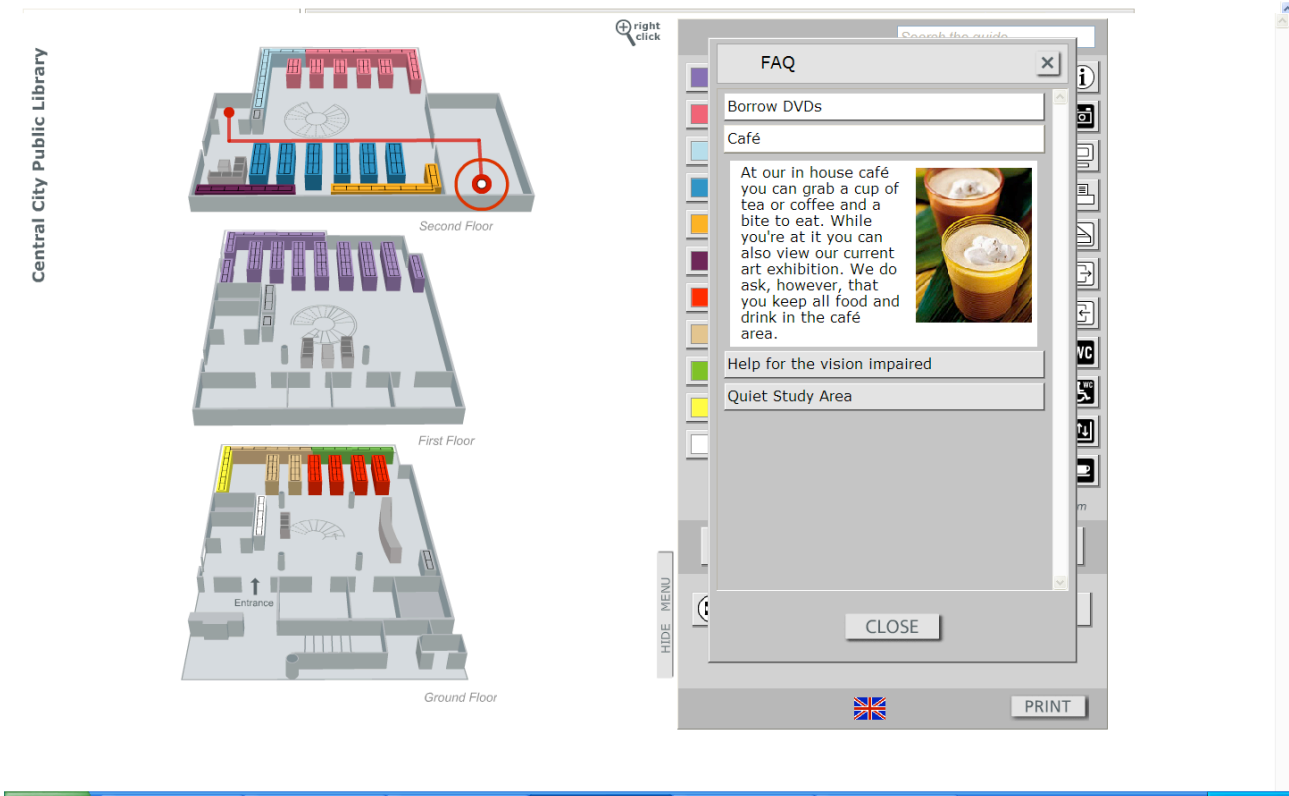


*This shows how slightly it is to edit the information in a sub menu. The Button is about sport.*

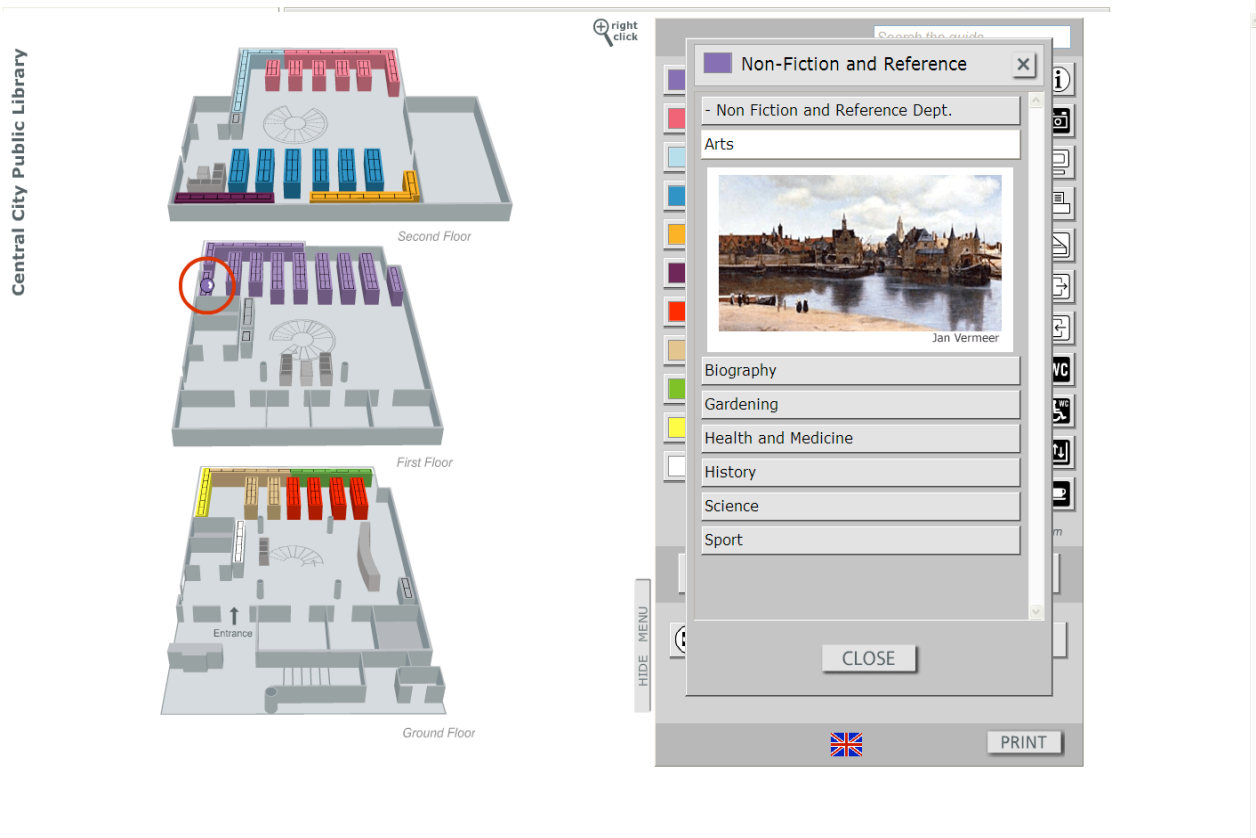




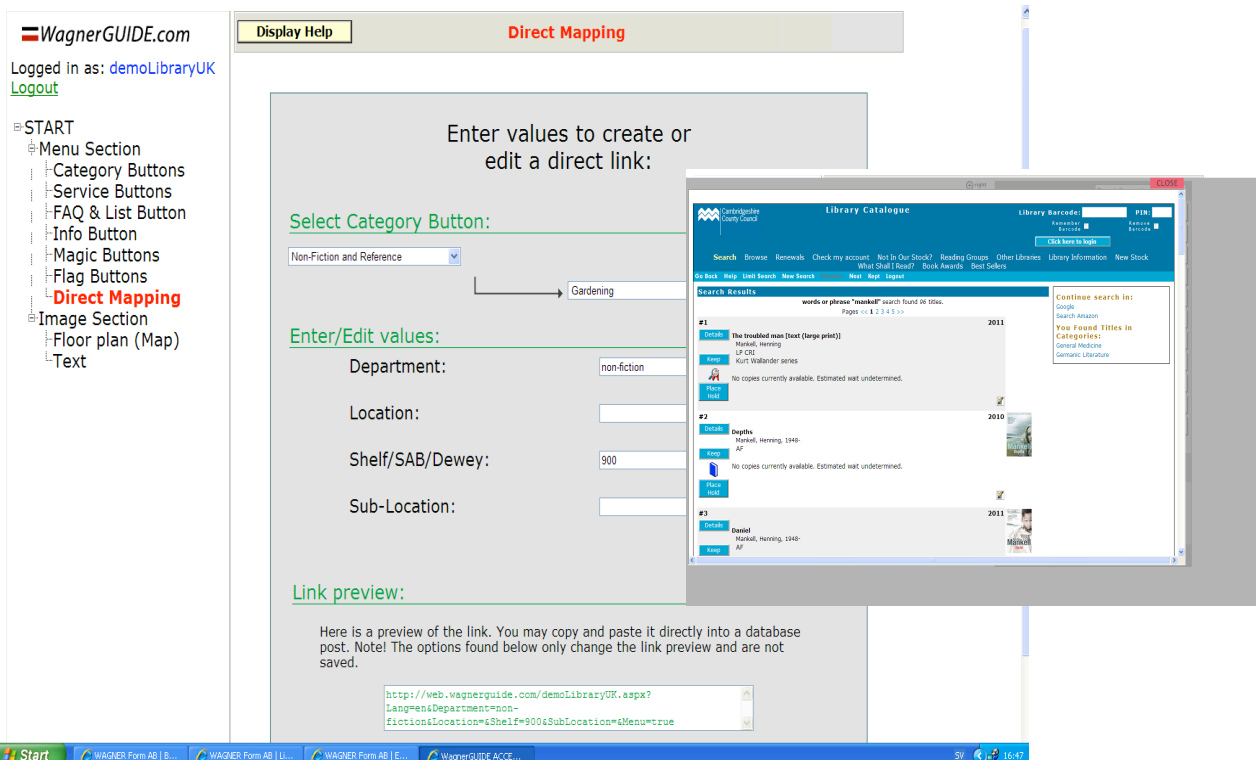
The image above illustrates how you can embed/integrate another guide (in this case - older version) in a guide. It can be another floor / house /area /site /web site etc.



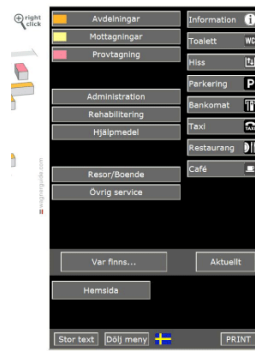
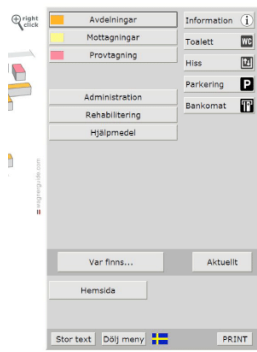
Above we display both the FAQ Button and the Path-function.



Don't forget to use the ability to import images into the sub menu.



With the DirectMapping tool you can link the data base (catalogue) to WagnerGUIDE – without big problems... We will help you! This is a choice.



## **Interface-design / colour**

WagnerGUIDE is possible to get in two different designs/ colours; *Classic* and *Black*.

## **Who needs this?**

The institution (library etc) which wants to be more accessible and have "self-going" / independent visitors. The institution that needs a modern tool - to visualize itself.



*We were entrusted with the job of developing an internal digital tool for the National Library of Sweden in Stockholm (Kungliga biblioteket).*

## **Benefits!**

WagnerGUIDE Access+ markets the institution.

The staff can devote their time to other things, than to answer - the "usual" questions. At least; you get satisfied visitors...

**Keywords:** *Accessible, User-friendly and Editable.*

**DIBBERN**  
Software

[www.dibberns.dk](http://www.dibberns.dk)